



UNIVERSITY OF ARKANSAS SYSTEM

CRIMINAL JUSTICE INSTITUTE

# CRIMINAL JUSTICE INSTITUTE

University of Arkansas System



[www.cji.net](http://www.cji.net)

*Quality and Excellence in  
Law Enforcement Assistance,  
Education and Training*

# Criminal Justice Institute

## University of Arkansas System



**Jim Clark**

Director

7723 Colonel Glenn Road  
Little Rock, Arkansas 72204  
Switchboard: (501) 570-8000  
Toll-free: (800) 635-6310  
Fax: (501) 565-3081

<b>Introduction .....</b>	<b>4</b>
Mission Statement	
Organizational Goal	
Programs and Services	
<b>Organization .....</b>	<b>6</b>
CJI Advisory Board Members	
CJI Organizational Chart	
<b>FY04 Funding Overview .....</b>	<b>8</b>
FY 04 Revenues	
FY 04 Expenditures	
<b>Centers of the Criminal Justice Institute .....</b>	<b>9</b>
Forensic Science and Computer Enhancement Center	
Law Enforcement Management Center	
<b>Higher Education Programs .....</b>	<b>16</b>
Crime Scene Investigation	
Law Enforcement Administration	
<b>National Center for Rural Law Enforcement .....</b>	<b>19</b>
Internet Project	
School Violence Resource Center and Safe School Initiative	
Rural Executive Management Institute	
Sexual Assault Investigation and Management Training	
Inter-Tribal Integrated Justice Pilot Project	
Tribal Technology and Information Sharing Outreach Program	

As the social climate within our communities continues to evolve and change, so do the roles and responsibilities of law enforcement in the State. Today, Arkansas law enforcement professionals are expected to perform a fuller gamut of services than ever before. In addition to their primary roles of *protector* and *enforcer*, they must also serve a variety of secondary roles—*teacher*, *counselor*, *mentor*, *mediator*, and *advocate*. Each role requires its own base of skills and knowledge, which is often best obtained through advanced training and education.

Unfortunately, as tax bases shrink throughout the State, training is often one of the first budget items to be cut or altogether eliminated, making it difficult for Arkansas law enforcement officers to build the foundation of knowledge they need to be more effective in their positions. Rural communities, which represent approximately 95% of the State, are often the hardest hit by deficiencies in law enforcement training. With urban crime trends rapidly emerging in small towns, most rural agencies lack sufficient resources and infrastructure to adequately respond to them. Advanced training and education assists these agencies in better managing the resources they do have and allows them to decrease their dependency on State and Federal intervention.

The Criminal Justice Institute, University of Arkansas System, was created to ensure that all Arkansas criminal justice agencies, regardless of size, obtain the training, support and resources they need to serve their communities more effectively and efficiently. To accomplish this mission, the Institute delivers affordable programs and services to urban and rural law enforcement agencies at locations across the State.

## Mission Statement

The mission of the Criminal Justice Institute (CJI), a division of the University of Arkansas System, is to enhance the professional and technical effectiveness of Arkansas' criminal justice entities by offering continuing education in the fields of management, forensics, and computer applications, together with providing research and technical assistance. CJI is committed to continuing and strengthening collaborative efforts with other higher education institutions for the Arkansas law enforcement community.

## Institutional Goal

To achieve its mission, CJI must design, enhance, and implement curriculum in management, forensic sciences, and computer education that meet the unique educational and training needs of the Arkansas law enforcement community. CJI is also committed to meeting the technical and informational support needs of this vitally important group.

## Programs and Services

Through the delivery of essential programs, resources, and services for criminal justice agencies throughout the State, particularly those located in rural areas, the Criminal Justice Institute is committed to assisting all law enforcement personnel in cultivating a strong sense of professionalism and ethics within their agencies. The cultivation of these attributes ultimately allows law enforcement personnel to function at a higher level of competency and awareness, thereby enhancing the quality of life for all Arkansans. The Institute offers:

- **Quality law enforcement education and training**—free of charge and at accessible locations
- **Instruction from criminal justice experts** who are renowned in their field
- **Specialized programs** designed to enhance the job performance of law enforcement personnel
- **Opportunities to complete higher education degrees** in Crime Scene Investigation and Law Enforcement Administration
- **Educational resources** to assist in law enforcement research and professional development
- **Access, training, and technical assistance** in new law enforcement technologies
- **Free publications** designed to keep law enforcement personnel aware of the latest news, management trends, and legal decisions in the Arkansas criminal justice community

## CJI Advisory Board Members

**Chief James Allen**

Bentonville Police Department  
Representing:  
Arkansas Association of Chiefs of Police

**Mr. Scott Baxter**

Jonesboro Police Department  
Representing:  
Arkansas Municipal Police Association  
President of the Association

**Chief Royce Carpenter**

Blytheville Police Department  
Representing:  
Arkansas Association of Chiefs of Police  
President of the Association

**Mr. James T. Clark**

Director  
Criminal Justice Institute

**Dr. Willie Hardin**

Associate Vice President  
for Academic Development  
Representing:  
Higher Education Program

**Chief Larry James**

University of Central Arkansas Police Department  
Representing:  
Arkansas Association of Chiefs of Police

**Mr. Chuck Lange**

Executive Director  
Representing:  
Arkansas Sheriffs' Association (ASA)

**Sergeant Glenn Mixon**

Pine Bluff Police Department  
Representing:  
Arkansas Municipal Police Association

**Sheriff Marty Montgomery**

Faulkner County Sheriff's Office  
Representing:  
Arkansas Sheriff's Association

**Mr. Carroll Payne**

Citizen at Large

**Captain Kathy Sparks**

Director of Legislative and  
Governmental Affairs  
Representing:  
Arkansas State Police Association

**Lieutenant Bobby Southard**

Hot Springs Police Department  
Representing:  
Arkansas Municipal Police Association

**Mr. Bill Temple**

FBI Special Agent in Charge  
Representing:  
Federal Bureau of Investigation

**Dr. Jack Thomas**

Professor, Behavioral Sciences  
Harding University  
Representing:  
Higher Education Program

**Sheriff Troy Tucker**

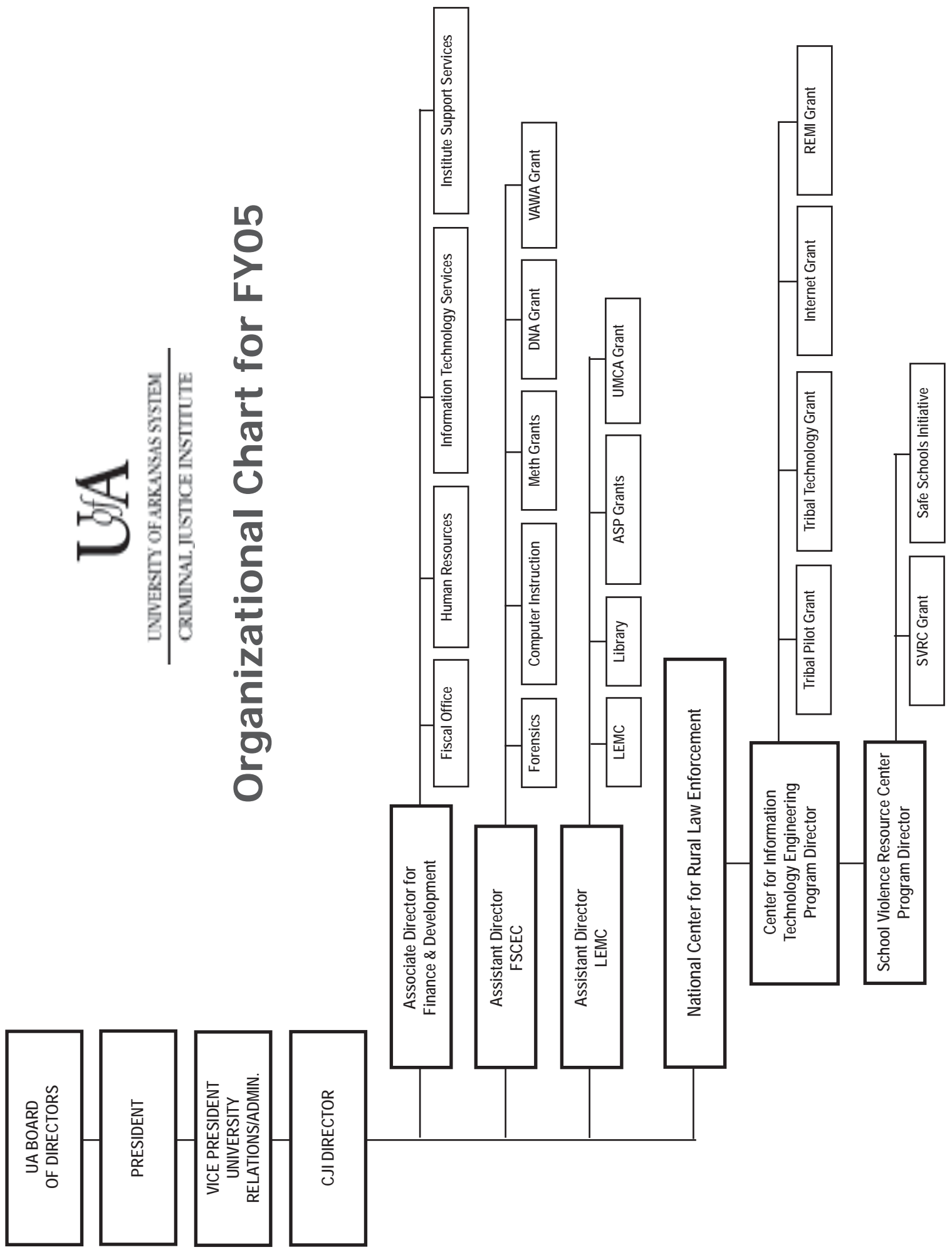
Clark County Sheriff's Office  
Representing:  
Arkansas Sheriffs' Association

**Ms. Joyce Wroten**

Vice President for Governmental  
Relations and Administration  
University of Arkansas System  
Official Representative of President of UA System



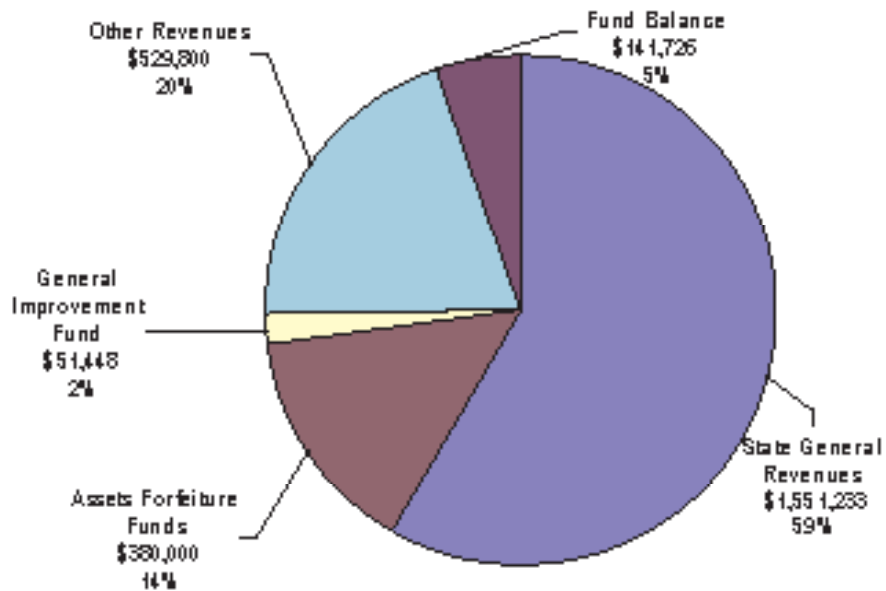
# Organizational Chart for FY05



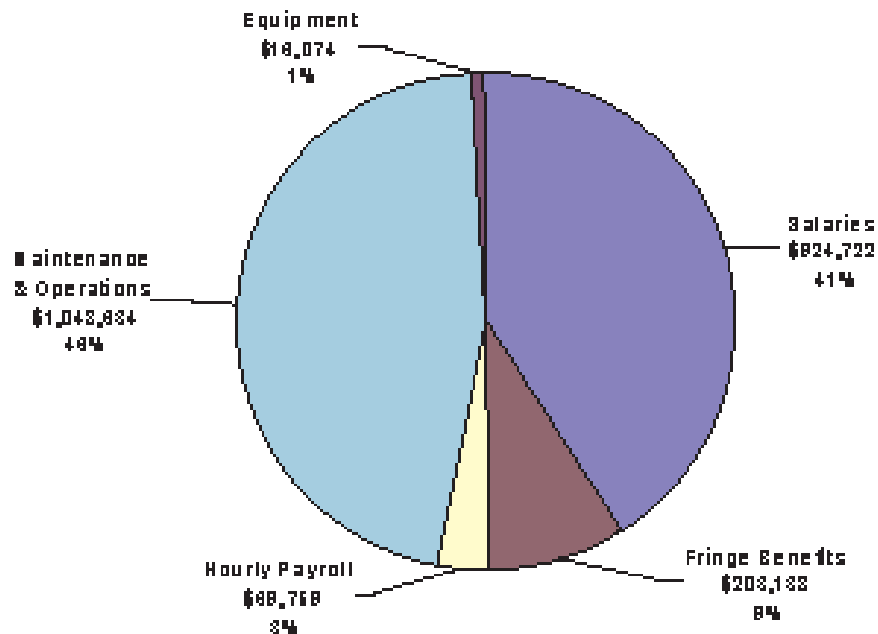
# FY04 Funding Overview

## FY04 Budget--\$2,654,207

### FY 04 Revenues



### FY 04 Expenditures







- Approximately 500 law enforcement personnel, representing at least 100 different agencies in the State, attend forensic science courses each year.
- Since the inception of the **Crime Scene Technician Certificate Program** in 1999, 115 Arkansas officers have successfully completed this program, which serves as the foundation for the Institute's academic certificate and degree programs in Crime Scene Investigation.

## Forensic Sciences and Computer Education Center

The primary mission of the Forensic Sciences and Computer Education Center is to provide quality instruction in two progressive areas of criminal justice, **Forensic Science** and **Computer Technology**, allowing the Arkansas law enforcement community to maximize the administrative and investigative benefits of these technologies and ultimately assisting them in solving more crime and enhancing the quality of life for the citizens they serve.

The courses offered range from introductory level courses such as *Crime Scene Investigation*, *Basic Crime Scene Processing*, and *Basic Digital Photography* to more specialized courses such as *Recovery of Human Remains*, *Computer Crime*, *Bloodstain Pattern Analysis*, and *Using Forensic Lightsources*. In addition, the FSCEC has developed two intensive programs designed to assist Arkansas law enforcement in processing crime scenes for physical evidence

—the **Crime Scene Technician Certificate Program** and the **Advanced Crime Scene Technician Certificate Program**. Both are nationally unique programs that allow rural law enforcement personnel to receive hands-on education and training in crime scene investigation.

FSCEC computer courses are designed to enhance the computer knowledge and skills of law enforcement officers and criminal justice personnel throughout the State. The Center offers seven different computer application courses, including *Introduction to Computers*, *Internet Research and E-Mail*, and *Microsoft Word, Excel, and Access*, to at least 400 law enforcement officers and other members of the Arkansas criminal justice community each fiscal year.



- Since 1999, the number of seizures reported to the Arkansas Crime Lab has doubled – increasing each year with 552 labs in 1999 and 1208 labs in 2003. State Crime Lab Estimates for 2004 project lab seizures to exceed 1500.
- Since October 2002, the **Methamphetamine Awareness, Identification and Safety for First Responders** course has been delivered to more than 700 Arkansas law enforcement officers and has been held in 21 different locations across the State.
- CJJ is exploring and conducting needs assessments related to the following potential courses of instruction: **Drug and Methamphetamine Endangered Children** and **Methamphetamine Seminar for Prosecutors and Judges**

## **Arkansas Clandestine Methamphetamine Laboratory Project**

The FSCEC has been awarded grant funding to develop and deliver **Methamphetamine Awareness, Identification and Safety for First Responders**, a training program that assists Arkansas law enforcement personnel in identifying, safely responding to, and efficiently investigating illicit methamphetamine production. Additional classes are being developed to assist law enforcement executives, parole and probation officers and law enforcement personnel certified by the Drug Enforcement Administration in clandestine laboratory processing.

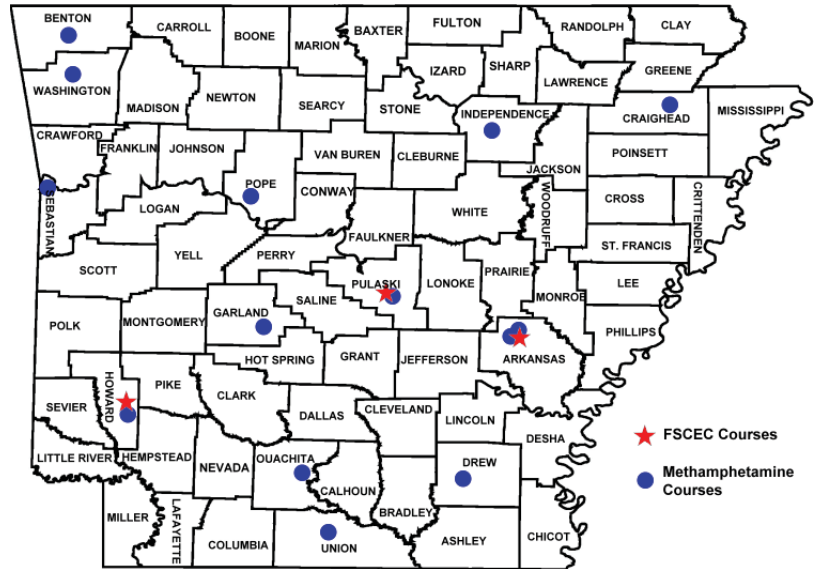
## **Drug Assets Forfeiture Grant**

To assist Arkansas law enforcement personnel in effectively investigating drug-related crimes, the FSCEC is developing a series of specialized programs for law enforcement executives, probation/parole personnel, investigators, front-line responders, and narcotics officers. Programs developed and delivered thus far include *Managing Meth Investigations*, *Outlaw Motorcycle Gang Investigations*, *Meth Awareness for Parole and Probation Officers*, *Latent Print Processing and Basic Digital Photography*. Upcoming classes will include *Meth-Related Violence and Meth Related Crimes*.

## **DNA Evidence Education and Training for Law Enforcement**

The FSCEC has received grant funding to develop and deliver an educational program that will assist Arkansas law enforcement personnel in identifying and maximizing the potential value of DNA evidence in solving crimes in the communities they serve and protect. A focus group consisting of State, local and county law enforcement officers, prosecutors, and forensic specialists has developed a seven-hour curriculum that will be delivered at least 16 times in different location across the State. In collaboration with the Arkansas Prosecutor Coordinator's office a similar one-day program, to be offered twice, is being developed.

- Computer Courses**
  - 26 classes offered
  - 377 attendees from 44 agencies
- Forensic Courses**
  - 33 classes offered
  - 606 attendees from 95 agencies
- Methamphetamine Courses**
  - 18 classes offered
  - 520 attendees from 158 agencies
- Drug Assets Forfeiture Grant**
  - 11 classes offered
  - 495 attendees from 81 agencies



### 2003-2004 FSCEC and Meth Grant Training Locations

Little Rock, Nashville, Stuttgart, Russellville,  
 Bentonville, Camden, El Dorado, Fort Smith,  
 Fayetteville, Jonesboro, Batesville, Hot Springs,  
 Monticello



## Law Enforcement Management Center

The primary mission of the Law Enforcement Management Center is to enhance the knowledge, skills, and abilities of Arkansas law enforcement professionals by providing management education and training courses customized to meet their needs.

The Center presents courses each year that offer law enforcement personnel the opportunity to

better understand our changing society. In addition, course offerings emphasize improving one's ability to better supervise or manage an agency, interact better with citizens and fellow workers, and develop additional education or skills that benefit the law enforcement profession.

The Center offers two intensive management programs—the School of Law Enforcement Supervision and Arkansas Leader. The **School of Law Enforcement Supervision** (SLES) was designed by Arkansas law enforcement leaders to focus on leadership, education, and advancement in the law enforcement profession. The course includes the study of organizational theory and design, administration, leadership, interpersonal and organizational communication, human resource management, legal issues, information systems and applications, decision-making, evaluation, and organizational change.

Recognizing the need to enhance executive education and training for Arkansas chiefs and sheriffs, **Arkansas Leader** was designed to equip these professionals with the skills they need to accomplish the goals and aims of their law enforcement agencies. This program, which is co-sponsored by the Criminal Justice Institute and the Federal Bureau of Investigation (FBI), was recently designated as an FBI Command College.

- Since its inception, more than 37,000 law enforcement officers, supervisors and managers have participated in one or more of the specialized areas of management education offered without cost to them by LEMC.
- The Center publishes three quarterly publications to ensure that Arkansas law enforcement receives up-to-date information on emerging trends and issues in criminal justice: CJI Management Quarterly, CJI Legal Briefs, and the CJI Bulletin.
- When Act 1207 of 2003 was passed by the Arkansas legislature, formally prohibiting racial profiling by Arkansas law enforcement, LEMC assisted agencies in complying by disseminating model policies and procedures regarding bias-based policing and providing educational programs designed to meet training requirements within the legislation.



- Since 1999, the Criminal Justice Institute has provided SFST training to more than 5,500 officers across the State. In addition, 1,500 officers have received training in Traffic Occupant Protection Strategies.
- Through training provided by the Institute, there are now 95 certified drug recognition experts in the State of Arkansas.
- Since initially receiving funding from the Pfizer Pharmaceutical Company, more than 1800 educators across the State have completed drug awareness training.

## **DWI/SFST/DRE Grant**

The Law Enforcement Management Center (LEMC) hosts a traffic safety program that is grant funded through the Arkansas State Police, Highway Safety Office. This program is the central source for Arkansas law enforcement officers to complete nationally recognized certification course offerings, including DWI Detection and Standardized Field Sobriety Tests (SFST), Drug Recognition Expert (DRE), and Drug Impairment Training for Educational Professionals.

## **Law Enforcement Liaison (LEL) Innovative Program**

The Arkansas State Police, Highway Safety Office provides grant funds to support the **Law Enforcement Liaison (LEL) Innovative Program**, a program aimed at increasing the seat belt usage rate in the State of Arkansas. The LEL presents and promotes a structured seat belt and safety program called "TOPS," Traffic Occupant Protection Strategies. A portion of this grant is used to purchase child safety seats that are distributed to Arkansas law enforcement agencies. The LEL then assists those agencies in hosting clinics that demonstrate the proper installation and free loan of these safety seats.

## **Pfizer Grant**

Through funding from the Pfizer Pharmaceutical Company, the Highway Safety Project of the Criminal Justice Institute has been presenting a drug awareness education program in schools throughout the State of Arkansas. The two-day program, **Drug Impairment Training for Education Professionals** or "DITEP," is presented by certified Drug Recognition Expert Police Officers and is attended by members of school faculty, including teachers, coaches, school nurses and administrators. Faculty members and school nurses receive training on the signs and symptoms usually exhibited by a person that is under the influence of drugs and/or alcohol.

## LEMC Courses

- 91 courses offered
- 2,523 attendees from 255 agencies

## School of Law Enforcement Supervision

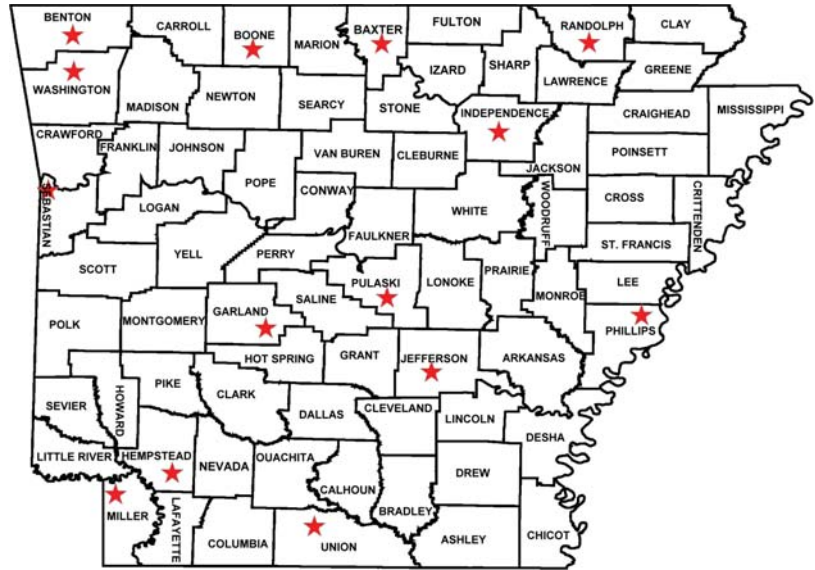
- 2 sessions offered
- 52 attendees from 30 agencies

## Arkansas Leader Program

- 1 session offered
- 30 attendees from 30 agencies

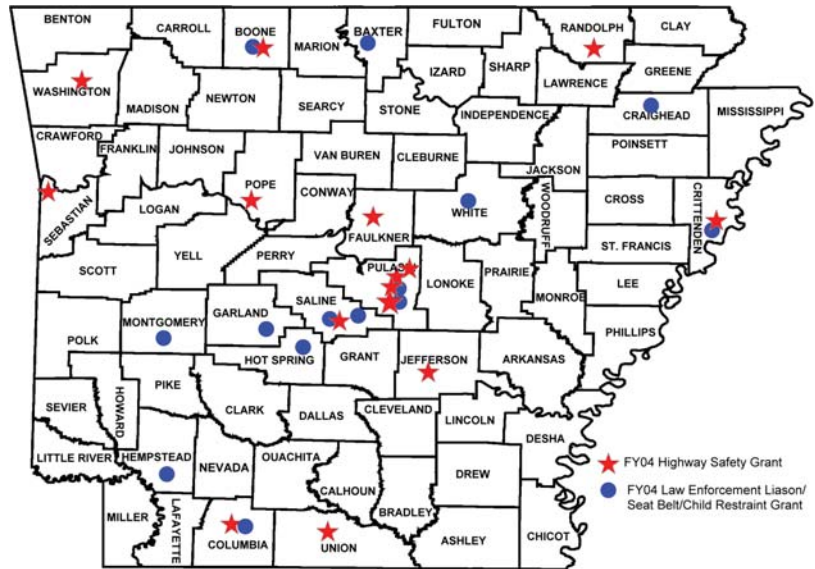
## DWI/SFST/DRE and Pfizer Grant Courses

- 56 courses offered
- 910 attendees from 138 agencies



**2003-2004 LEMC Training Locations**

Little Rock, Mountain Home, Bentonville, Pocahontas, El Dorado, Fayetteville, Fort Smith, Hot Springs, Harrison, Helena, Pine Bluff, Texarkana, Batesville, and Hope



**2003-2004 Highway Safety and Seat Belt Safety Training Locations**

Little Rock, Russellville, Fayetteville, Jackson County, Pocahontas, Sherwood, Pine Bluff, West Memphis, Jacksonville, Fort Smith, North Little Rock, Magnolia, Harrison, El Dorado, Mt. Ida, Malvern, Mountain Home, Hot Springs, Bryant, Searcy, Jonesboro, Benton, Hope



- Library Services features a collection of more than **3,800 books** and **583 videos, CDs and audio tapes**, one of the most comprehensive collections of law enforcement resources in the State.

## Library Services

The Law Enforcement Management Center's Library Services provides research and reference materials to CJI staff and Arkansas law enforcement practitioners who need information on criminal justice-related subjects such as Forensics, Management, Criminal Investigation, Corrections, Bias-Based Policing, and Terrorism—just to name a few. The Center houses numerous books, journals, periodicals, training manuals, and videotapes that can be utilized by CJI staff and law enforcement agencies across the state for in-house training, research, and professional development.

Books and videos are loaned for a two-week period and can be renewed by phone or email. For those who cannot visit the Library in person, items are mailed and requests may be made by phone or email with the understanding that they are responsible only for the return postage. Purchases for the library are selected for their relevance to the law enforcement community and by the stated interest of subjects and issues by law enforcement personnel and CJI staff.



UNIVERSITY OF ARKANSAS SYSTEM  
CRIMINAL JUSTICE INSTITUTE

## Participating Colleges and Universities

### Four-Year Institutions

Arkansas State University at Jonesboro

University of Arkansas at Fort Smith

University of Arkansas at Monticello

University of Arkansas at Pine Bluff

### Two-Year Institutions

Arkansas State University at Beebe

Arkansas State University  
at Mountain Home

Arkansas State University at Newport

Black River Technical College

Cossatot Community College of the UA

Arkansas Northeastern College

North Arkansas College

Northwest Arkansas Community College

Ouachita Technical College

Ozarka College

Phillips Community College of the UA

Pulaski Technical College

South Arkansas Community College

UA Community College at Batesville

UA Community College at Morrilton

The Criminal Justice Institute is partnering with colleges and universities across the State to expand higher education opportunities for Arkansas law enforcement. Through two unique programs—**Crime Scene Investigation** and **Law Enforcement Administration**—law enforcement personnel can now obtain **Certificates of Proficiency**, **Technical Certificates**, and **Associate of Applied Science Degrees** in fields of study specific to the law enforcement profession.

### Program Requirements

Both programs of study, which are **the only programs of this kind in the Nation**, are available exclusively to Arkansas law enforcement personnel who are actively employed within a criminal justice organization in the State. To successfully complete a program, participants will be required to take special courses through the Criminal Justice Institute along with general education courses from participating colleges and universities.

Although students will be required to pay all tuition and fees of the college or university, courses completed at the Institute are provided **free of charge** to Arkansas law enforcement personnel, allowing them to complete certificate and degree programs at a fraction of the normal cost. Information concerning financial aid opportunities, including pell grants, student loans, and workforce improvement grants, can be obtained by contacting the financial aid offices of participating higher education institutions.

Once a student is admitted to the college or university of his/her choosing, all credit hours earned at the Institute will be transferred to a participating higher education institution.



The **Law Enforcement Administration** program is designed to prepare law enforcement professionals for the unique challenges they will face as supervisors and agency heads. Utilizing proven management principles specific to law enforcement, participants will learn how to better meet the needs of their personnel and constituents. In addition, they will develop needed skills in critical areas of law enforcement management, including communication, case law, agency development, and much more.

## Certificate of Proficiency

(18 Credit Hours)

COURSES	CREDIT HOURS
School of Law Enforcement Supervision ..... 9 (140 contact hours)	9
Law Enforcement Electives ..... 6 (These hours are earned through completion of the Arkansas Law Enforcement Training Academy or its Commission on Law Enforcement Standards and Training approved equivalent.)	6
*General Education Requirements ..... 3	3

## Technical Certificate

(36 Credit Hours)

COURSES	CREDIT HOURS
School of Law Enforcement Supervision ..... 9 (140 contact hours)	9
Law Enforcement Administration and Management ..... 3 (49 contact hours) Principles of Supervision Advanced Supervision Leadership Managing Media Relations	3
Integrity in Law Enforcement ..... 3 (52 contact hours) Police Internal Affairs Background Investigations of Police Applicants	3
Law Enforcement Electives ..... 6	6
*General Education Requirements ..... 15	15

\* Students enrolled in these programs of study will obtain general education credits from a participating college or university of their choosing. The college or university will determine the courses that need to be taken to satisfy the general education requirements.

## Associate of Applied Science Degree

(63 Credit Hours)

COURSES	CREDIT HOURS
School of Law Enforcement Supervision ..... 9 (140 contact hours)	9
Law Enforcement Administration and Management ..... 3 (49 contact hours)	3
Integrity in Law Enforcement (52 contact hours) ..... 3	3
Legal Aspects of Law Enforcement ..... 3 (45 contact hours selected from the following electives:) Civil Liability Criminal Procedure Update Warrantless Search and Seizure Courtroom Testimony Search Warrant Update Update of Arkansas Legal Decisions Use of Force Case File Preparation	3
Principles of Law Enforcement ..... 3 (45 contact hours selected from the following electives:) Crime Prevention: Proactive Tactics to Stop Crime Bulletproof Mind Coping with Law Enforcement Stress Managing Drug Investigations Managing Informants and Cooperative Witnesses Managing Interviews and Interrogations	3
DWI Detection and Field Tests (56 contact hours) ..... 3  DWI Detection and Standardized Field Sobriety Testing DWI Detection and SFST Instructor Development	3
Law Enforcement Communications ..... 3 (45 contact hours selected from the following electives:) Basic Spanish for Law Enforcement Power Writing Conflict Resolution for Supervisors Law Enforcement Response to the Mentally Ill Communication Excellence in Law Enforcement	3
Crisis Negotiations (45 contact hours) ..... 3	3
Law Enforcement Electives ..... 6	6
*General Education Requirements ..... 27	27

Rapid advances in the forensic sciences have had a tremendous impact on criminal investigations. Utilizing new technologies and techniques, investigators today have more resources at hand than ever before to successfully process crime scenes. The **Crime Scene Investigation** program has been designed to provide law enforcement practitioners with these resources. Through hands-on instruction and access to experts in the field, participants will gain the knowledge and skills needed to recognize and appropriately document, collect, preserve, and store evidence from a crime scene, ultimately allowing them to solve more crime in their communities.

## Certificate of Proficiency

(18 Credit Hours)

COURSES	CREDIT HOURS
<b>Crime Scene Technician Certificate Program</b> .....	<b>9</b>
(126 contact hours)	
<b>Law Enforcement Electives</b> .....	<b>6</b>
(These hours are earned through completion of the Arkansas Law Enforcement Training Academy or its Commission on Law Enforcement Standards and Training approved equivalent.)	
<b>*General Education Requirements</b> .....	<b>3</b>

## Technical Certificate

(36 Credit Hours)

COURSES	CREDIT HOURS
<b>Crime Scene Investigation Certificate of Proficiency</b> .....	<b>18</b>
<b>Special Topics</b> .....	<b>12</b>
(194 contact hours)	
Recovery of Human Remains	
Bloodstain Pattern Analysis	
Management of Evidence and Recovered Property	
Computer Crime	
Crime Scene Digital Photography and Imaging	
Fingerprint Comparison and Identification	
Using Forensic Light Sources	
Crime Scene Courtroom Testimony	
<b>**Computer Applications</b> .....	<b>3</b>
(63 contact hours)	
Introduction to Computers	
Using Microsoft Word	
Using Microsoft Excel	
Introduction to the Internet	
<b>*Additional General Education Requirements</b> .....	<b>3</b>

## Associate of Applied Science

(62 Credit Hours)

COURSES	CREDIT HOURS
<b>Crime Scene Investigation Technical Certificate</b> .....	<b>36</b>
<b>Advanced Crime Scene Technician Certificate Program</b> .....	<b>4</b>
(63 contact hours)	
<b>Special Topics</b> .....	<b>4</b>
(84 contact hours)	
Advanced Management of Evidence and Recovered Property	
Bloodstain Pattern Documentation	
Crime Scene Interpretation and Reconstruction	
Survival Spanish for Law Enforcement	
<b>*Additional General Education Requirements</b> .....	<b>18</b>

\* Students enrolled in these programs of study will obtain general education credits from a participating college or university of their choosing. The college or university will determine the courses that need to be taken to satisfy the general education requirements.

\*\* May be substituted with a computer applications course offered by a participating college or university.

# National Center for Rural Law Enforcement

## Arkansas and Nationwide Grants



- 166 law enforcement agencies in Arkansas are currently receiving Internet service through CJI's Internet Project.
- In the last 12 months, more than 400 information requests and updates have been disseminated through the CopShare list serve.

The National Center for Rural Law Enforcement (NCRLE), a division of the Criminal Justice Institute, provides management and forensic education, research, computer and technical assistance for rural and tribal law enforcement agencies throughout the nation. **All activities of the NCRLE are supported through the acquisition of grant funding and cooperative agreements.**

### Internet Project

The Internet Project receives funding from the Bureau of Justice Assistance (BJA), United States Department of Justice (USDOJ) to provide the following services:

- **Internet service** for 1,374 rural law enforcement and tribal agencies in 48 states nationwide and the administration of 4,270 e-mail accounts
- **Toll-free access** to technical assistance and professional support through an established help desk
- **Free web site hosting** to any law enforcement agency that has a web site developed or guidance to any agency in the development of a web site
- Access to and assistance in applying for **BJA web-based grant management programs**, such as Bullet Proof Vest (BVP) for law enforcement
- Internet or telephone access to an **informational resource center**
- **CopShare**, a law enforcement e-mail list serve that promotes information sharing between law enforcement agencies nationwide through inter-agency dissemination of criminal justice information

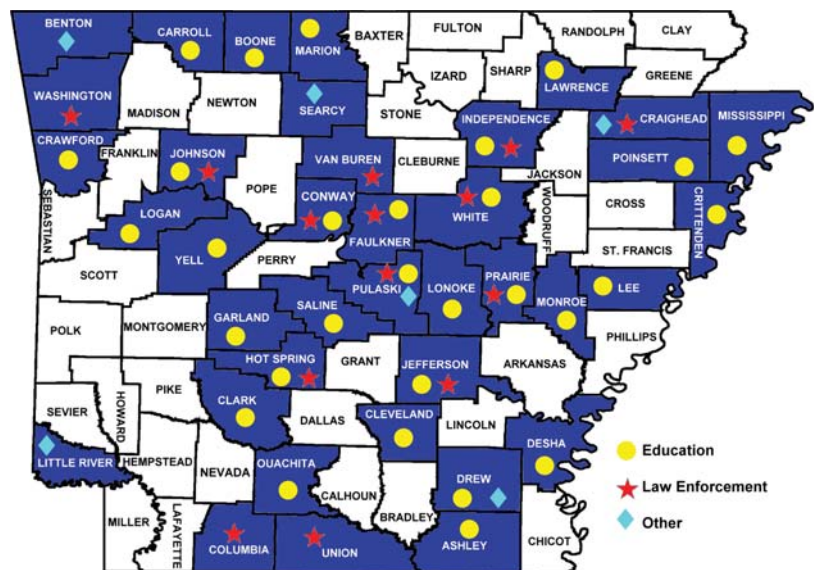


## School Violence Resource Center

The **School Violence Resource Center (SVRC)** was created to provide communities with the resources and support they need to reduce violence on school campuses. Through a web-based resource center, [www.svrc.net](http://www.svrc.net), stakeholders in school violence have access to timely information, including sample crisis management plans, SRO policy and procedures, school-related crime statistics, and fact sheets on topics including bullying, character education, and crime on college campuses. Research publications are available on-line in English and Spanish.

- The SVRC website averages 12,000 to 15,000 hits per month.
- A total of 26 fact sheets and seven briefing papers have been developed to assist SVRC stakeholders in better evaluating issues related to school violence and developing effective plans for safe schools.
- A toll-free help desk has been established to assist callers with special needs. To date, SVRC has responded to 129 requests from 38 counties in Arkansas.
- The SVRC website has more than 500 links to additional school violence resources.
- Based on the results of a statewide survey, the SVRC is currently developing an advanced training program for School Resource Officers.
- The SVRC has developed a model flipchart, **Managing Emergencies in Schools**, which will soon be disseminated to all public schools in the State.

The SVRC also delivers presentations on issues related to school violence and safety. The SVRC staff have developed and delivered the following curricula: *Stop Bullying Now*, *Personal Safety Awareness in the School*, *School-based Incident Planning*, *Tools of Terrorism: Weapon of Mass Destruction*, *Tools of Terrorism: Suicide Bomber, Rape Aggression Defense (R.A.D.) Strategies*, and *Crisis Planning: Tabletop Drills*. In addition, the Center conducts a 2 ½ day Community Crisis Preparedness Workshop to rural communities to assist them in developing an understanding of the process involved in preparing to respond to a critical incident utilizing all community resources and doing so in the most effective and efficient manner.





- REMI sessions have been held in 20 states and have been attended by approximately 500 rural executives representing 48 states throughout the U.S. Of this number, 47 were Arkansas rural chiefs of police and sheriffs.
- 190 law enforcement executives and 62 investigators have attended training session in rural assault management and investigation.
- This program aims to raise the awareness level of managers and investigators concerning the effects of rape and sexual assault on the victim

## Rural Executive Management Institute

The Rural Executive Management Institute is an intensive three-day course designed exclusively for rural law enforcement managers with populations of 25,000 or less for police departments and 50,000 or less for sheriff's offices. This unique program:

- Ensures essential leadership training is obtainable and affordable for rural law enforcement executives
- Explores topics including *Leadership, Communication Concepts, Managing Rural Departments, Media Relations, Managing Budgets and Grants, Tools of Terrorism, Forensics and DNA, and Recruiting and Retention*
- Provides a forum for participants to discuss common problems and explore workable solutions

REMI is presented at locations throughout the United States and is funded by the Bureau of Justice Assistance.

## Sexual Assault Investigation and Management Training for Rural Law Enforcement

The NCRLE, in a collaborative effort with the National Training Center on Domestic and Sexual Violence (NTCDSV), provides education and training on sexual assault to rural law enforcement executives and rural investigators. The objectives of this project are:

- Provide specialized education and training to eligible law enforcement participants, emphasizing a victim-centered approach
- Assist managers in developing or refining the management practices in their agencies concerning sexual assault
- Assist investigators in becoming more effective in their investigation of a sexual assault

This project is funded through a cooperative agreement with the Violence Against Women Office (VAWO).



- The TTISOP project utilizes a 30-unit mobile computer lab that was used to teach a crime mapping class for the Arkansas Department of Corrections in November and December 2003. This lab is also available for use by the Criminal Justice Institute to provide additional training to Arkansas law enforcement personnel.
- A comprehensive self-assessment questionnaire is available free of charge for any agency to use to evaluate, administer, and plan their information technology programs and resources.
- Agencies nationwide can use our toll-free help desk (877-47-TJISS) or our online technical support knowledgebase to ask computer, network, or software questions.

## **Inter-Tribal Integrated Justice Pilot Project**

Through funding from the Bureau of Justice Assistance, Office of Justice Programs, the NCRLE has worked for more than four years with Navajo, Hopi, and Zuni representatives to develop an integrated data system between all three tribes. These efforts have resulted in the successful creation of a technical infrastructure that is allowing effective information sharing among Navajo, Hopi, and Zuni justice agencies and will serve as a template for future technology integration initiatives in other tribal and rural law enforcement communities across the Nation.

Accomplishments with this grant include providing technical assessments, purchasing and installing over 200 workstations, 40 servers, 40 switches, 38 wireless data systems and complete network cabling for the three tribes. These networks were located in ten different towns in Arizona and New Mexico, encompassing 48 criminal justice agencies.

## **Tribal Technology and Information Sharing Outreach Program**

The purpose of this grant is to provide technical information and materials for tribal justice agencies to empower them to better assess, plan, and implement information technology and information sharing systems within their justice agencies.

NCRLE developed the Tribal Justice Information Sharing Site (TJISS) at [www.tjiss.net](http://www.tjiss.net) to serve as a repository for information technology training materials and assessment tools. All the documentation at TJISS is available for download free of charge, not only to tribal agencies, but to rural law enforcement in the state of Arkansas and throughout the nation.

This project is funded through the Bureau of Justice Assistance, Office of Justice Programs.