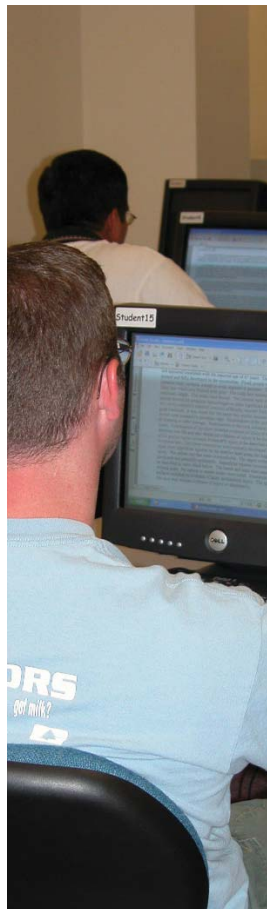




UNIVERSITY OF ARKANSAS SYSTEM
CRIMINAL JUSTICE INSTITUTE

Criminal Justice Institute

Annual Report FY 2005



www.cji.edu

*Quality and Excellence in Law Enforcement
Assistance, Education, and Training*

Criminal Justice Institute



James T. Clark

Director

7723 Colonel Glenn Road
Little Rock, Arkansas 72204
Switchboard: (501) 570-8000
Toll-free: (800) 635-6310
Fax: (501) 565-3081

www.cji.edu

Introduction	4
Mission Statement	
Organizational Goal	
Programs and Services	
Organization	6
CJI Advisory Board Members	
CJI Organizational Chart	
FY05 Funding Overview	8
FY 05 Revenues	
FY 05 Expenditures	
Statewide Programs and Services	9
Forensic Science and Computer Enhancement Center	
Law Enforcement Management Center	
Library Services	
Higher Education Programs	17
Crime Scene Investigation	
Law Enforcement Administration	
National Center for Rural Law Enforcement	20
Internet Project	
School Violence Resource Center	
Rural Executive Management Institute (REMI)	
Sexual Assault Investigation and Management Training	
The SENTINEL Project	
Inter-Tribal Integrated Justice Pilot Project	
BJS Tribal Criminal History Record Improvement Program (T-CHRIP)	
Tribal Technology Information Sharing Outreach Program	

As the social climate within our communities continues to evolve, so do the roles and responsibilities of law enforcement in the State. Today, Arkansas law enforcement professionals are expected to perform a more comprehensive array of services than ever before. In addition to their primary roles of *protector* and *enforcer*, they must also serve a variety of secondary roles—*teacher*, *counselor*, *mentor*, *mediator*, and *advocate*. Each role requires a unique set of skills and knowledge, which is often best obtained through advanced training and education.

Unfortunately, as tax bases shrink throughout the State, training is often one of the first budget items to be cut or altogether eliminated, making it difficult for Arkansas law enforcement officers to build the foundation of knowledge they need to be more effective in their positions. Rural communities, which represent approximately 95% of the State, are often the hardest hit by funding deficiencies for law enforcement training. With urban crime trends rapidly emerging in small towns, most rural agencies lack sufficient resources and infrastructure to adequately respond to them. Advanced training and education assists these agencies in better managing the resources they do have and allows them to decrease their dependency on State and Federal intervention.

The Criminal Justice Institute, University of Arkansas System, was created to ensure that all Arkansas criminal justice agencies, regardless of size, obtain the training, support and resources they need to serve their communities more effectively and efficiently. To accomplish this mission, the Institute delivers programs and services to urban and rural law enforcement agencies at locations across the State.

Mission Statement

The mission of the Criminal Justice Institute (CJI), a division of the University of Arkansas System, is to enhance the professional and technical effectiveness of Arkansas' criminal justice entities by offering continuing education in the fields of management, forensics, and computer applications, together with providing research and technical assistance. CJI is committed to continuing and strengthening collaborative efforts with other higher education institutions for the benefit of the Arkansas law enforcement community.

Institutional Goal

To achieve its mission, CJI must design, enhance, and implement curricula in management, forensic sciences, and computer education topics that meet the unique educational and training needs of the Arkansas law enforcement community. CJI is also committed to meeting the technical and informational support needs of this vitally important group.

Programs and Services

Through the delivery of essential programs, resources, and services for criminal justice agencies throughout the State, particularly those located in rural areas, the Criminal Justice Institute is committed to assisting all law enforcement personnel in cultivating a strong sense of professionalism and ethics within their agencies. The cultivation of these attributes ultimately allows law enforcement personnel to function at a higher level of competency and awareness, thereby enhancing the quality of life for all Arkansans. The Institute offers:

- **Quality law enforcement education and training**—free of charge and at accessible locations
- **Instruction from criminal justice experts** who are renowned in their field
- **Specialized programs** designed to enhance the job performance of law enforcement personnel
- **Opportunities to complete higher education degrees** in Crime Scene Investigation and Law Enforcement Administration
- **Educational resources** to assist in law enforcement research and professional development
- **Access, training, and technical assistance** in new law enforcement technologies
- **Free publications** designed to keep law enforcement personnel aware of the latest news, management trends, and legal decisions in the Arkansas criminal justice community

CJI Advisory Board Members

Chief James Allen

Bentonville Police Department
Representing:
Arkansas Association of Chiefs of Police

Chief Royce Carpenter

Blytheville Police Department
Representing:
Arkansas Association of Chiefs of Police
President of the Association

Mr. James T. Clark

Director
Criminal Justice Institute

Dr. Willie Hardin

Associate Vice President
for Academic Development
University of Central Arkansas
Representing:
Higher Education Program

Chief Larry James

University of Central Arkansas Police Department
Representing:
Arkansas Association of Chiefs of Police

Mr. Chuck Lange

Executive Director
Representing:
Arkansas Sheriffs' Association (ASA)

Sergeant Glenn Mixon

Pine Bluff Police Department
Representing:
Arkansas Municipal Police Association

Sheriff Marty Montgomery

Faulkner County Sheriff's Office
Representing:
Arkansas Sheriff's Association

Mr. Carroll Payne

Citizen at Large

Mr. Roger Pearson

Searcy Police Department
Representing:
Arkansas Municipal Police Association
President of the Association

Lieutenant Bobby Southard

Hot Springs Police Department
Representing:
Arkansas Municipal Police Association

Captain Kathy Sparks

Director of Legislative and
Governmental Affairs
Representing:
Arkansas State Police Association

Mr. Bill Temple

FBI Special Agent in Charge
Representing:
Federal Bureau of Investigation

Dr. Jack Thomas

Professor, Behavioral Sciences
Harding University
Representing:
Higher Education Program

Sheriff Troy Tucker

Clark County Sheriff's Office
Representing:
Arkansas Sheriffs' Association

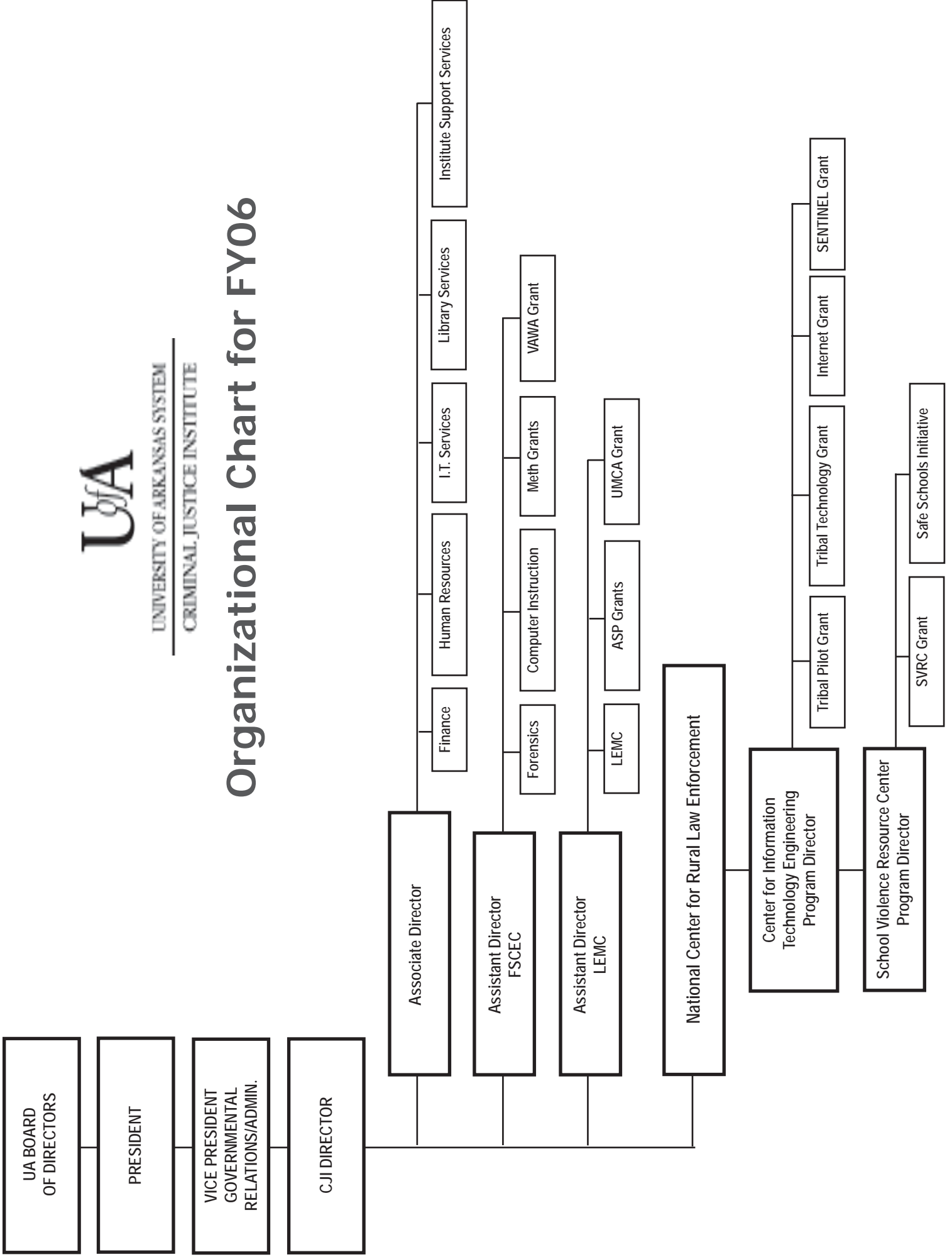
Ms. Joyce Wroten

Vice President for University
Relations and Administration
University of Arkansas System
Official Representative of President of UA System



UNIVERSITY OF ARKANSAS SYSTEM
CRIMINAL JUSTICE INSTITUTE

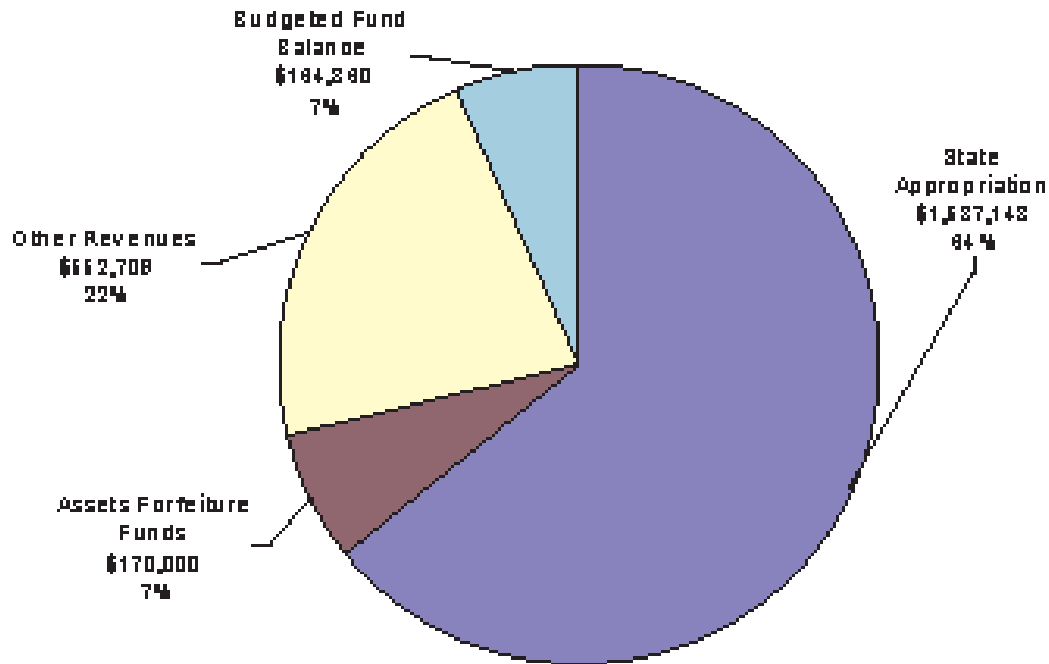
Organizational Chart for FY06



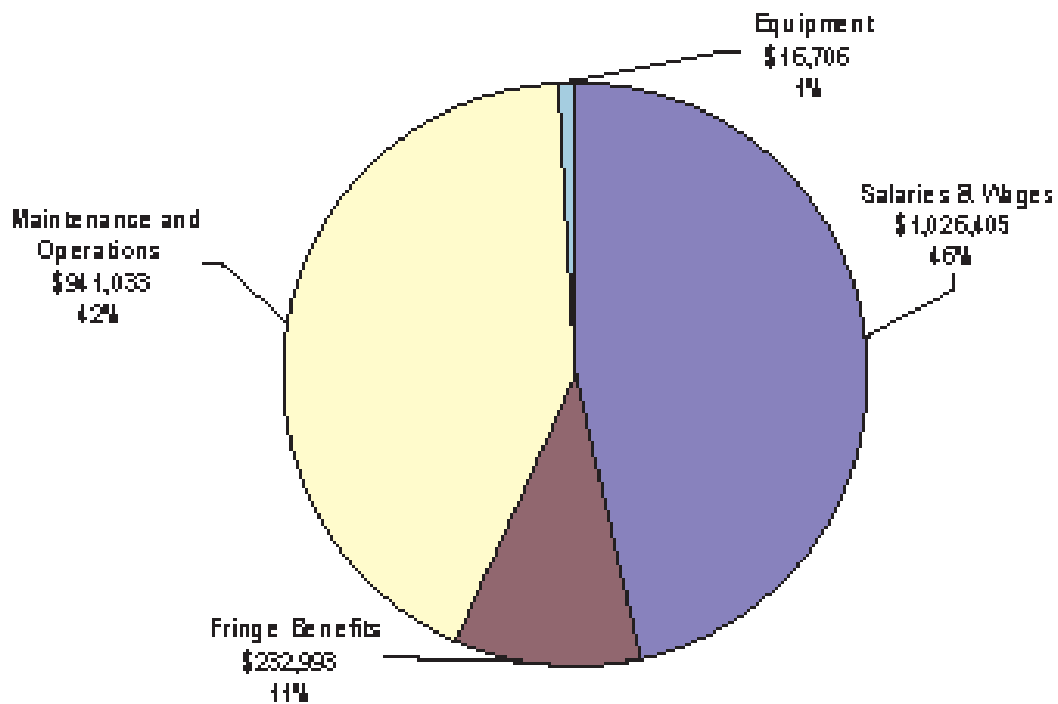
FY05 Funding Overview

FY05 Budget—\$2,474,717

FY 05 Revenues



FY 05 Expenditures





- Approximately 650 law enforcement personnel, representing at least 125 different agencies in the State, attend forensic science courses each year.
- Since the inception of the **Crime Scene Technician Certificate Program** in 1999, 139 Arkansas officers from 82 different law enforcement agencies have successfully completed this program. This program serves as the foundation for the Institute's academic certificate and degree programs in Crime Scene Investigation.

Forensic Sciences and Computer Education Center

The primary mission of the Forensic Sciences and Computer Education Center (FSCEC) is to provide quality instruction in three progressive areas of criminal justice—**Forensic Science, Computer Technology, and Drug Investigations**—allowing the Arkansas law enforcement community to maximize the administrative and investigative benefits of these technologies and ultimately assisting them in solving more crime and enhancing the quality of life for the citizens they serve and protect.

The Forensic Sciences Program courses offered range from introductory level classes such as *Crime Scene Investigation*, *Basic Crime Scene Processing*, and *Basic Digital Photography* to more specialized courses such as *Recovery of Human Remains*, *Computer Crime*, *Bloodstain Pattern Analysis*, *Using Forensic Lightsources*, and *Digital Photography and Imaging*. In addition, the FSCEC has developed two intensive programs designed to assist Arkansas law enforcement in processing crime scenes for physical evidence—the **Crime Scene Technician Certificate Program** and the **Advanced Crime Scene Technician Certificate Program**. Both are nationally unique programs that allow rural law enforcement personnel to receive hands-on education and training in crime scene investigation.

FSCEC Computer Enhancement Program courses are designed to strengthen the computer knowledge and skills of law enforcement officers and criminal justice personnel throughout the State. The Center offers seven different computer application courses, including *Introduction to Computers*, *Internet Research and E-Mail*, and *Microsoft Word, Excel, and Access*, to at least 350 law enforcement officers and other members of the Arkansas criminal justice community each fiscal year.

Arkansas Clandestine Methamphetamine Laboratory Project



- Since October 2002, the **Arkansas Methamphetamine Training Project** has delivered 20 different courses to more than 1,300 Arkansas law enforcement officers at 24 different locations across the State.
- CJI is exploring and conducting needs assessments related to the following potential courses of instruction: Drug and Methamphetamine Endangered Children and Community Coalition Efforts Focused on Methamphetamine-Related Issues.

Beginning in 2002, the FSCEC has been awarded federal and state grant funding to develop and deliver training programs that assist Arkansas law enforcement personnel in identifying, safely responding to, and efficiently investigating illicit methamphetamine production. Since 2002, ten different courses have been developed to assist law enforcement executives, parole and probation officers, and law enforcement personnel certified by the Drug Enforcement Administration in clandestine laboratory processing. Programs developed and delivered in 2004 include *Methamphetamine Awareness, Identification, and Safety for First Responders*; *The Arkansas Meth Challenge: An Information Focus for Law Enforcement Executives*; *Managing Meth Investigations*; *Meth Awareness for Parole and Probation Officers*; *Latent Print Processing*; *Basic Digital Photography*; *Meth-Related Violence and Meth Related Crimes*; *Advanced Drug Investigations*; *Clan Lab Field Sampling and Evidence Preparation*; and *Undercover Drug Investigations*.

Meth Issues Conferences

In response to the dynamic nature of illicit methamphetamine use, distribution, and production in our State, the FSCEC, through a partnership with the Office of the Arkansas Drug Director, also delivered two timely meth-related conferences. More than 350 criminal justice professionals and others attended *The Arkansas Meth Action Conference* and *The Arkansas Drug Endangered Children Conference*. *Criminal Drug Interdiction* was also provided in support of the Arkansas Narcotics Officers' Association at their annual conference.



Computer Applications for Law Enforcement Executives

In partnership with 19 institutions of higher education across the State, the Criminal Justice Institute developed and delivered a computer applications training program designed specifically for chiefs and sheriffs. Forty-seven law enforcement executives benefited from these valuable statewide partnerships.

DNA Evidence Education and Training for Law Enforcement

The FSCEC has received grant funding to develop and deliver an educational program that will assist Arkansas law enforcement personnel in identifying and maximizing the potential value of DNA evidence in solving crimes in the communities they serve and protect. A focus group consisting of State, local, and county law enforcement officers, prosecutors, and forensic specialists developed a seven-hour curriculum that was delivered at 11 different locations across the State. In collaboration with the Office of the Prosecutor Coordinator, an eight-hour DNA program was developed and delivered in July 2005.

FSCEC Overview

- 120 courses offered at 29 different locations
- 2,424 attendees from 447 different agencies

Computer Courses

- 39 classes offered
- 364 attendees from 95 agencies

Forensic Sciences Courses

- 36 classes offered
- 650 attendees from 125 agencies

Methamphetamine Courses

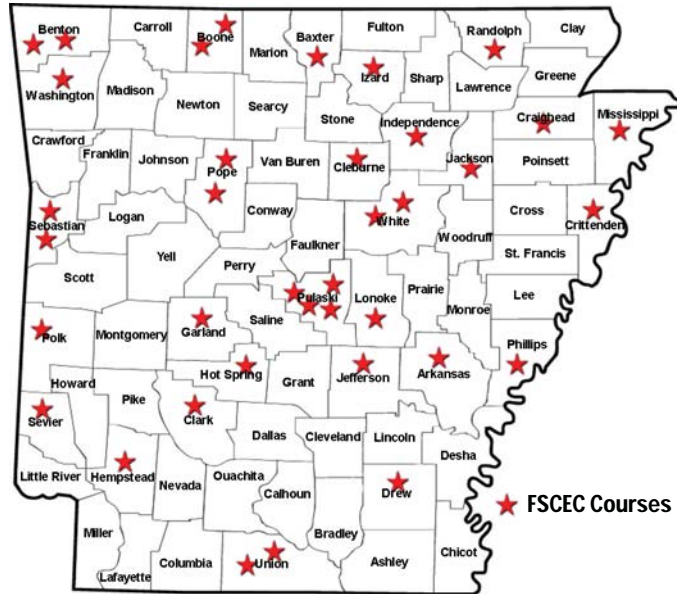
- 28 classes offered
- 648 attendees from 218 agencies

Meth-Related Conferences

- 4 meth-related conferences
Arkansas Methamphetamine Action Conference, Arkansas Drug Endangered Children Conference, Arkansas Alliance for Drug Endangered Children, Criminal Drug Interdiction
- 474 attendees from 197 agencies

DNA Evidence Program

- 11 classes offered
- 217 attendees from 80 agencies



FSCEC Courses

2004-2005 FSCEC Training Locations

Blytheville, Searcy, Jonesboro, Mountain Home, Newport, Bentonville, Pocahontas, Little Rock, De Queen, El Dorado, Harrison, Fort Smith, Heber Springs, Arkadelphia, Hot Springs, West Memphis, Malvern, Melbourne, Helena, Russellville, Mena, Stuttgart, Hope, Batesville, Fayetteville, Monticello, and Pine Bluff



- Since its inception, more than 40,000 law enforcement officers, supervisors, and managers have participated in one or more of the specialized areas of management education offered without cost to them by LEMC.
- The Center publishes three quarterly publications to ensure that Arkansas law enforcement receives up-to-date information on emerging trends and issues in criminal justice: CJI Management Quarterly, CJI Legal Briefs, and the CJI Bulletin.

Law Enforcement Management Center

The primary mission of the Law Enforcement Management Center is to enhance the knowledge, skills, and abilities of Arkansas law enforcement professionals by providing management education and training courses customized to meet their needs.

The Center presents courses each year that offer law enforcement personnel the opportunity to better understand our changing society. In addition, course offerings emphasize improving one's ability to better supervise or manage an agency, interact better with citizens and fellow workers, and develop additional education or skills that benefit the law enforcement profession.

The Center offers two intensive management programs—the School of Law Enforcement Supervision and Arkansas Leader. The **School of Law Enforcement Supervision (SLES)** was designed by Arkansas law enforcement leaders to focus on leadership, education, and advancement in the law enforcement profession. The course includes the study of organizational theory and design, administration, leadership, interpersonal and organizational communication, human resource management, legal issues, information systems and applications, decision-making, evaluation, and organizational change.

Recognizing the need to enhance executive education and training for Arkansas chiefs and sheriffs, **Arkansas Leader** was designed to equip these professionals with the skills they need to accomplish the goals and aims of their law enforcement agencies. This program, which is co-sponsored by the Criminal Justice Institute and the Federal Bureau of Investigation (FBI), was recently designated as an FBI Command College.



- Since 1999, the Criminal Justice Institute has provided SFST training to more than 6,000 officers across the State. In addition, 1,832 officers have received training in Traffic Occupant Protection Strategies.
- Through training provided by the Institute, there are now 235 certified drug recognition experts in the State of Arkansas.
- Since initially receiving funding from the Pfizer Pharmaceutical Company, more than 2,000 educators across the State have completed drug awareness training.

DWI/SFST/DRE Grant

The Law Enforcement Management Center (LEMC) hosts a traffic safety program that is grant funded through the Arkansas State Police, Highway Safety Office. This program is the central source for Arkansas law enforcement officers to complete nationally recognized certification course offerings, including DWI Detection and Standardized Field Sobriety Tests (SFST), Drug Recognition Expert (DRE), and Drug Impairment Training for Educational Professionals.

Law Enforcement Liaison (LEL) Innovative Program

The Arkansas State Police, Highway Safety Office provides grant funds to support the Law Enforcement Liaison (LEL) Innovative Program, a program aimed at increasing the seat belt usage rate in the State of Arkansas by promoting the National Mobilization *CLICK IT OR TICKET* (CIOT). The grant also promotes the reduction of drunk and drugged driving with the *You Drink & Drive, You Lose* (YDDYL) Campaign. The LEL sponsors an incentive program for the CIOT Mobilization and the YDDYL Campaign. The incentive programs will award 18 law enforcement agencies this year for participating in one or both of the National programs. The LEL also sponsors law enforcement summits in areas that lag behind the rest of the state in seat belt use or have higher incidents of drunk or drugged driving.

Pfizer Grant

Through funding from the Pfizer Pharmaceutical Company, the Highway Safety Project of the Criminal Justice Institute has been presenting a drug awareness education program in schools throughout the State of Arkansas. The two-day program, **Drug Impairment Training for Education Professionals** or "DITEP," is presented by certified Drug Recognition Expert Police Officers and is attended by members of school faculty, including teachers, coaches, school nurses and administrators. Faculty members and school nurses receive training on the signs and symptoms usually exhibited by a person that is under the influence of drugs and/or alcohol.

LEMC Courses

- 94 courses offered
- 3,191 attendees from 384 agencies

School of Law Enforcement Supervision

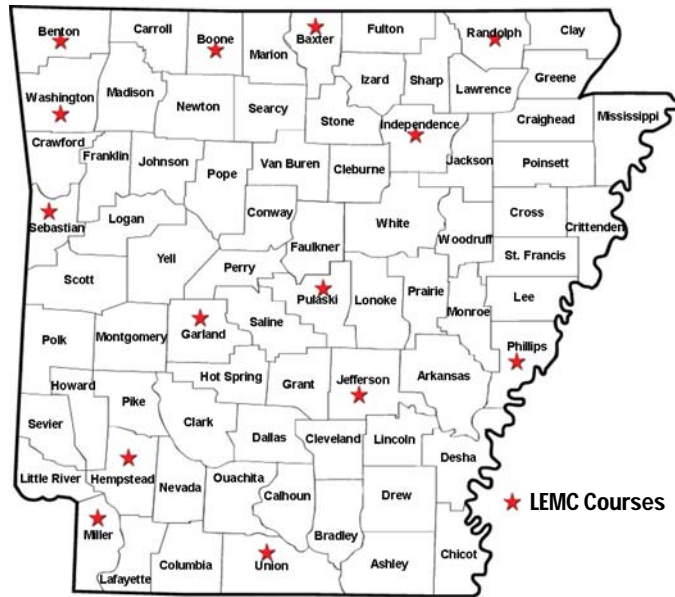
- 2 sessions offered
- 52 attendees from 31 agencies

Arkansas Leader Program

- 1 session offered
- 30 attendees from 30 agencies

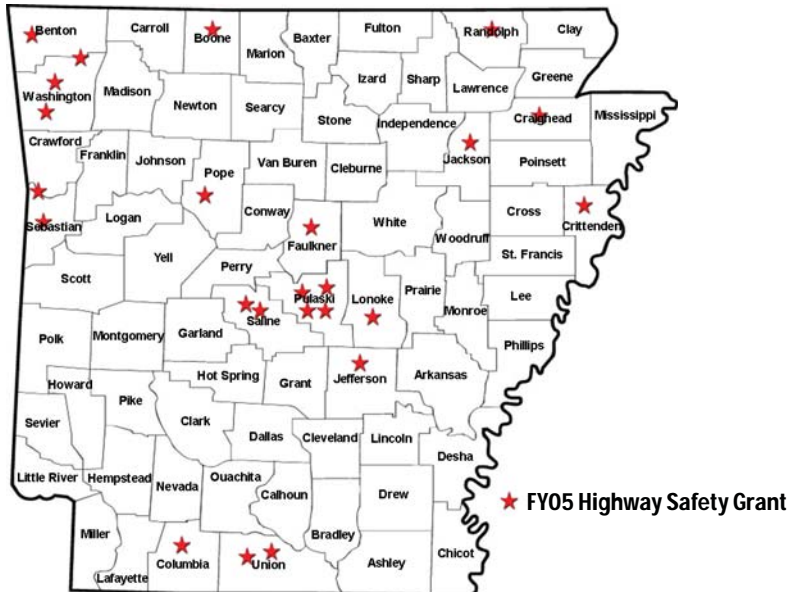
DWI/SFST/DRE, TOPS and Pfizer Grant Courses

- 53 courses offered
- 1,324 attendees from 81 agencies



2004-2005 LEMC Training Locations

Little Rock, Bentonville, Pocahontas, Fayetteville, Fort Smith, Hot Springs, Harrison, Helena, Pine Bluff, Texarkana, Batesville, West Memphis, Jacksonville, Blytheville, Magnolia



2004-2005 Highway Safety and Seat Belt Safety Training Locations

Pine Bluff, Jacksonville, North Little Rock, Little Rock, Bryant, Junction City, West Memphis, Jonesboro, Sherwood, Cabot, Van Buren, Rogers, El Dorado, Conway, Pocahontas, Harrison, Fort Smith, Russellville, Benton, Fayetteville, Springdale, Magnolia, Farmington, Newport, and Bentonville



- Library Services features a collection of more than **4,000 books** and more than **700 videos, CDs and audio tapes**, one of the most comprehensive collections of law enforcement resources in the State.

Library Services

CJI's Library Services provides research and reference materials to CJI staff and Arkansas law enforcement practitioners who need information on criminal justice-related subjects such as Forensics, Management, Criminal Investigation, Corrections, Bias-Based Policing, and Terrorism—just to name a few. The Center houses numerous books, journals, periodicals, training manuals, and videotapes that can be utilized by CJI staff and law enforcement agencies across the state for in-house training, research, and profes-

sional development.

Books and videos are loaned for a two-week period and can be renewed by phone or email. For those who cannot visit the Library in person, items are mailed and requests may be made by phone or email with the understanding that they are responsible only for the return postage. Purchases for the library are selected for their relevance to the law enforcement community and by the stated interest of subjects and issues by law enforcement personnel and CJI staff.

For a complete on-line listing of CJI books and videotapes, visit us online at www.cji.edu.



UNIVERSITY OF ARKANSAS SYSTEM
CRIMINAL JUSTICE INSTITUTE

Participating Colleges and Universities

Four-Year Institutions

Arkansas State University at Jonesboro
University of Arkansas at Fort Smith
University of Arkansas at Monticello
University of Arkansas at Pine Bluff

Two-Year Institutions

Arkansas State University at Beebe
Arkansas State University
at Mountain Home
Arkansas State University at Newport
Black River Technical College
Cossatot Community College of the UA
North Arkansas College
Northwest Arkansas Community College
Ouachita Technical College
Ozarka College
Phillips Community College of the UA
Pulaski Technical College
South Arkansas Community College
UA Community College at Batesville
UA Community College at Morrilton

The Criminal Justice Institute is partnering with colleges and universities across the State to expand higher education opportunities for Arkansas law enforcement. Through two unique programs—**Crime Scene Investigation** and **Law Enforcement Administration**—law enforcement personnel can now obtain **Certificates of Proficiency**, **Technical Certificates**, and **Associate of Applied Science Degrees** in fields of study specific to the law enforcement profession.

Program Requirements

Both programs of study, which are **the only programs of this kind in the Nation**, are available exclusively to Arkansas law enforcement personnel who are actively employed within a criminal justice organization in the State. To successfully complete a program, participants will be required to take special courses through the Criminal Justice Institute along with general education courses from participating colleges and universities.

Although students will be required to pay all tuition and fees of the college or university, courses completed at the Institute are provided **free of charge** to Arkansas law enforcement personnel, allowing them to complete certificate and degree programs at a fraction of the normal cost. Information concerning financial aid opportunities, including pell grants, student loans, and workforce improvement grants, can be obtained by contacting the financial aid offices of participating higher education institutions.

Once a student is admitted to the college or university of his/her choosing, all credit hours earned at the Institute will be transferred to a participating higher education institution.

Rapid advances in forensic science technology have had a tremendous impact on criminal investigations. Utilizing new technologies and techniques, investigators today have more resources at hand than ever before to more effectively and efficiently process crime scenes. The **Crime Scene Investigation** program has been designed to provide law enforcement practitioners with these resources. Through hands-on instruction and access to experts in the field, participants will gain the knowledge and skills needed to recognize and appropriately document, collect, preserve, and store evidence from a crime scene, ultimately allowing them to solve more crime in their communities.

Certificate of Proficiency

(18 Credit Hours)

COURSES	CREDIT HOURS
Crime Scene Technician Certificate Program	9
(126 contact hours)	
Law Enforcement Electives	6
(These hours are earned through completion of the Arkansas Law Enforcement Training Academy or its Commission on Law Enforcement Standards and Training approved equivalent.)	
*General Education Requirements	3

Technical Certificate

(36 Credit Hours)

COURSES	CREDIT HOURS
Crime Scene Investigation Certificate of Proficiency	18
Special Topics	12
(194 contact hours)	
Recovery of Human Remains	
Bloodstain Pattern Analysis	
Management of Evidence and Recovered Property	
Computer Crime	
Crime Scene Digital Photography and Imaging	
Fingerprint Comparison and Identification	
Using Forensic Light Sources	
Crime Scene Courtroom Testimony	
**Computer Applications	3
(63 contact hours)	
Introduction to Computers	
Using Microsoft Word	
Using Microsoft Excel	
Introduction to the Internet	
*Additional General Education Requirements	3

Associate of Applied Science

(62 Credit Hours)

COURSES	CREDIT HOURS
Crime Scene Investigation Technical Certificate	36
Advanced Crime Scene Technician Certificate Program	4
(63 contact hours)	
Special Topics	4
(84 contact hours)	
Advanced Management of Evidence and Recovered Property	
Bloodstain Pattern Documentation	
Crime Scene Interpretation and Reconstruction	
Survival Spanish for Law Enforcement	
*Additional General Education Requirements	18

* Students enrolled in these programs of study will obtain general education credits from a participating college or university of their choosing. The college or university will determine the courses that need to be taken to satisfy the general education requirements.

** May be substituted with a computer applications course offered by a participating college or university.

The **Law Enforcement Administration** program is designed to prepare law enforcement professionals for the unique challenges they will face as supervisors and agency heads. Utilizing proven management principles specific to law enforcement, participants will learn how to better meet the needs of their personnel and constituents. In addition, they will develop needed skills in critical areas of law enforcement management, including communication, case law, agency development, and much more.

Certificate of Proficiency

(18 Credit Hours)

COURSES	CREDIT HOURS
School of Law Enforcement Supervision 9 (140 contact hours)	9
Law Enforcement Electives 6 (These hours are earned through completion of the Arkansas Law Enforcement Training Academy or its Commission on Law Enforcement Standards and Training approved equivalent.)	6
*General Education Requirements 3	3

Technical Certificate

(36 Credit Hours)

COURSES	CREDIT HOURS
School of Law Enforcement Supervision 9 (140 contact hours)	9
Law Enforcement Administration and Management 3 (49 contact hours)	3
Principles of Supervision	
Advanced Supervision	
Leadership	
Managing Media Relations	
Integrity in Law Enforcement 3 (52 contact hours)	3
Police Internal Affairs	
Background Investigations of Police Applicants	
Law Enforcement Electives 6	6
*General Education Requirements 15	15

* Students enrolled in these programs of study will obtain general education credits from a participating college or university of their choosing. The college or university will determine the courses that need to be taken to satisfy the general education requirements.

Associate of Applied Science Degree

(63 Credit Hours)

COURSES	CREDIT HOURS
School of Law Enforcement Supervision 9 (140 contact hours)	9
Law Enforcement Administration and Management 3 (49 contact hours)	3
Integrity in Law Enforcement (52 contact hours) 3	3
Legal Aspects of Law Enforcement 3 (45 contact hours selected from the following electives:)	3
Civil Liability	
Criminal Procedure Update	
Warrantless Search and Seizure	
Courtroom Testimony	
Search Warrant Update	
Update of Arkansas Legal Decisions	
Use of Force	
Case File Preparation	
Principles of Law Enforcement 3 (45 contact hours selected from the following electives:)	3
Crime Prevention: Proactive Tactics to Stop Crime	
Bulletproof Mind	
Coping with Law Enforcement Stress	
Managing Drug Investigations	
Managing Informants and Cooperative Witnesses	
Managing Interviews and Interrogations	
DWI Detection and Field Tests (56 contact hours) 3	3
DWI Detection and Standardized Field Sobriety Testing	
DWI Detection and SFST Instructor Development	
Law Enforcement Communications 3 (45 contact hours selected from the following electives:)	3
Basic Spanish for Law Enforcement	
Power Writing	
Conflict Resolution for Supervisors	
Law Enforcement Response to the Mentally Ill	
Communication Excellence in Law Enforcement	
Crisis Negotiations (45 contact hours) 3	3
Law Enforcement Electives 6	6
*General Education Requirements 27	27

National Center for Rural Law Enforcement

Arkansas and Nationwide Grants



The National Center for Rural Law Enforcement (NCRLE), a division of the Criminal Justice Institute, provides management and forensic education, research, computer and technical assistance for rural and tribal law enforcement agencies throughout the nation. **All activities of the NCRLE are supported through the acquisition of grant funding and cooperative agreements.**

Internet Project

The Internet Project receives funding from the Bureau of Justice Assistance (BJA), United States Department of Justice (USDOJ) to provide the following services:

- 92 law enforcement agencies in Arkansas are currently receiving Internet service through CJI's Internet Project.
- In the last 12 months, more than 700 information requests and updates have been disseminated through the CopShare list serve.
- **Internet service** for 695 rural law enforcement and tribal agencies in 48 states nationwide and the administration of 1,703 e-mail accounts
- **Toll-free access** to technical assistance and professional support through an established help desk
- **Free web site hosting** to any law enforcement agency that has a web site developed or guidance to any agency in the development of a web site
- Access to and assistance in applying for **BJA web-based grant management programs**, such as Bullet Proof Vest (BVP) for law enforcement
- Internet or telephone access to an **informational resource center**
- **CopShare**, a law enforcement e-mail list serve that promotes information sharing between law enforcement agencies nationwide through inter-agency dissemination of criminal justice information



- In FY05, the SVRC had 171,060 hits on its website—an average of 14,000 hits per month. The website has more than 500 links to additional school violence resources.
- SVRC conducted research and evaluated school violence-related initiatives and programs. Over 30 fact sheets and briefing papers have been written.
- SVRC developed a model flipchart, *Managing Emergencies in Schools*, and disseminated it to all public schools in the State.
- A toll-free help desk has been established to assist callers with special needs. In FY 2005, SVRC responded to 161 technical assistance requests.
- SVRC developed and disseminated Arkansas' first SRO directory and an advanced training program for SROs. SVRC also facilitated the establishment of the Arkansas Safe Schools Association.

School Violence Resource Center

The **School Violence Resource Center (SVRC)** was created to provide communities with the resources and support they need to reduce violence on school campuses. Through a web-based resource center, www.svrc.net, stakeholders in school violence have access to timely information, including sample crisis management plans, SRO policy and procedures, school-related crime statistics, and fact sheets on topics including bullying, character education, and crime on college campuses. Research publications are available on-line in English and Spanish.

The SVRC also delivers presentations on issues related to school safety. The SVRC staff have developed and delivered the following curricula: *Stop Bullying Now*, *Tools of Terrorism*, *Safe Schools Classes for SROs and Administrators*, and *Concealed Weapons*. In addition, the Center, conducts a 2 ½ day Community Crisis Preparedness Workshop to rural communities to assist them in developing an understanding of the process involved in preparing to respond to a critical incident utilizing all community resource and doing so in the most effective and efficient manner.

Stop Bullying Now! Drawing Contest

To promote community awareness of the dangers of bullying, the School Violence Resource Center hosted a drawing contest for elementary, junior high, and high school students. Submissions were received from 809 elementary students, 97 middle school/junior high students, and 49 high school students. Local teaching professionals – including teachers, counselors, and school resource officers – helped select nine winning entries. Contest winners were:

Elementary:

- 1st Place – Colton Haney, Collegeville Elementary
- 2nd Place – Quentin D. Rose, Hillcrest Elementary
- 3rd Place – Jessica Baugh, Collegeville Elementary

Junior High/Middle School:

- 1st Place – John Wesley Withrow, Jessierville Middle School
- 2nd Place – Kristen Clay, Douglas MacArthur Jr. High School
- 3rd Place – Janel Hart, Magnet Cove Jr. High School

High School:

- 1st Place – Soelan Ham, Joe T. Robinson High School
- 2nd Place – Lauren Cooper, Joe T. Robinson High School
- 3rd Place – Courtney McCowen, Joe T. Robinson High School

Safe Schools Classes for SROs and School Administrators

- 7 classes offered
- 563 attendees from 144 agencies

Community Crisis Preparedness Workshops

- 2 workshops offered
- 63 attendees from 55 agencies

Anti-Bullying Presentations

- 32 professional in-services and student presentations offered
- 3,720 attendees from 32 agencies

Tools of Terrorism

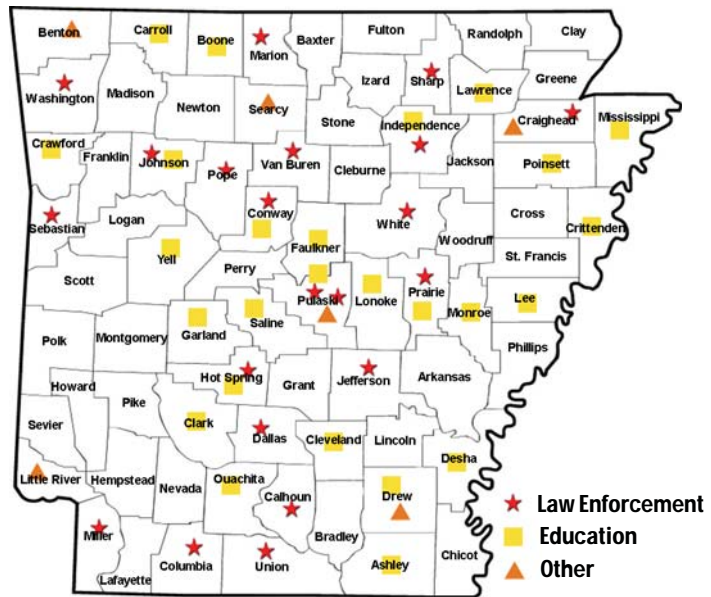
- 5 classes offered
- 575 attendees

Concealed Weapons

- 4 professional in-services
- 184 attendees from 4 agencies

Summary of Classes and Presentations

- Total Classes and Presentations: 50
- Total Attendees: 5,105
- Total Number of Agencies Served: 235





- REMI sessions have been held in 22 states and have been attended by approximately 600 rural executives representing 49 states throughout the U.S. Of this number, 67 were from Arkansas.

- This program aims to raise the awareness level of managers and investigators concerning the effects of rape and sexual assault on the victim

Rural Executive Management Institute (REMI)

The Rural Executive Management Institute is an intensive three-day course designed exclusively for rural law enforcement managers. This unique program:

- Ensures essential leadership training is obtainable and affordable for rural law enforcement executives

- Explores topics including *Leadership, Communication Concepts, Managing Rural Departments, Media Relations, Managing Budgets and Grants, Tools of Terrorism, Managing Multiple Cultures, Forensics and DNA, and Recruiting and Retention*

- Provides a forum for participants to discuss common problems and explore workable solutions

REMI has been presented at locations throughout the United States through funding from the Bureau of Justice Assistance.

Sexual Assault Investigation and Management Training for Rural Law Enforcement

The NCRLE, in a collaborative effort with the National Center on Domestic and Sexual Violence (NCDSV), provides education and training on sexual assault to rural law enforcement executives and rural investigators. The objectives of this project are to:

- Provide specialized education and training to eligible law enforcement participants, emphasizing a victim-centered approach
- Assist managers in developing or refining the management practices in their agencies concerning sexual assault
- Assist investigators in becoming more effective in their investigation of a sexual assault

This project is funded through a cooperative agreement with the Office on Violence Against Women (OVW), U.S. Department of Justice.



- Through the SENTINEL project, NCRLE will provide free cybersecurity training to 1,800 public safety personnel over a two-year period. Using a mobile computer lab, NCRLE will bring the training directly to centralized rural and metropolitan areas across the country. The training focuses on enhancing the prevention, preparedness, and response capabilities of local, state, tribal, and rural public safety jurisdictions.
- NCRLE's Center for Information Technology Engineering (CITE) will manage all phases of this training. CITE consists of highly trained computer, network, data, and security engineers that specialize in the application of technical resources in public safety agencies.

The SENTINEL Project

On August 24, 2004, the U.S. Department of Homeland Security awarded the National Center for Rural Law Enforcement (NCRLE) with a Competitive Training Grant for the SENTINEL project. SENTINEL, which stands for Security and Network Training Initiative and National Education Laboratory, will educate public safety personnel in cyberterrorism response and prevention.

This training is designed for all experience levels of users and technicians in the state and local public safety sector. Cybersecurity training classes will be provided on two separate tracks: Track 1 and Track 2. Track 1 emphasizes prevention, deterrence, and recovery, while

Track 2 primarily deals with incident handling and response. Both tracks will involve lecture, personal interaction between the instructor and students, as well as hands-on labs utilizing the 60 workstations of the SENTINEL Mobile Lab and the SENTINEL Hardware Example Lab.

NCRLE has produced the course materials for Tracks 1 and 2, including the Presentation Manual and Lab Manuals. Course materials are provided in class and on a website repository for future use by class participants. By using the resources provided during the classes and online, those trained will be able to share their knowledge with the technical staff in their own jurisdictions.

NCRLE will hold several pilot classes before rolling out the program to the remainder of the country. Feedback and evaluations from the pilot classes will be used to improve and enhance the curriculum and training methods. Announcements for the pilot classes and the future courses will be announced on the SENTINEL website at www.sentinelproject.net.



- NCRLE provides a help desk to assist tribal justice agencies with their technical support and integration questions. This help desk will be staffed with NCRLE computer specialists who are experienced in proper practices and procedures, and will be able to assist these agencies with a wide variety of support issues. This help desk will be available via telephone and e-mail.
- This project utilizes a 30-unit mobile computer lab that was used to teach a crime mapping class for the Arkansas Department of Corrections in November and December 2003. The computer lab will be utilized in training for Phase II of the project.
- Phase III of the project will entail the integration of the tribal networks and datacenters with local, state, and federal agencies.

Inter-Tribal Integrated Justice Pilot Project

In June 2005, NCRLE received an additional grant from the Bureau of Justice Assistance, Office of Justice Programs, to continue working with the Navajo Nation, Hopi Tribe, and the Pueblo of Zuni on the Inter-Tribal Integrated Justice Pilot Project. This funding is for the continuation of Phase II of this project, which entails the creation of tribal datacenters to extract and export data that can be shared among the tribes' various justice agencies. Each tribe will house its own datacenter to be a central point for the collection and retrieval of justice data. Tribal facilities and departments connected to the datacenters will include the police, detention centers, courts, and prosecuting attorney's offices.

The datacenters will be a permanent, effective, and efficient mechanism for gathering, compiling, and reporting criminal information. The centers will be linked using Justice XML (GJXDM 3.0) standards to quickly and easily exchange specified data (e.g., protection orders, missing children information, and DUI conviction data) between the tribes. The datacenters will be the focal point for all tribal information sharing efforts and will be used well beyond the life of this project.

During Phase I of the project, NCRLE created the technical infrastructure necessary for an integrated data system between all three tribes. NCRLE developed networks in ten different towns in Arizona and New Mexico, encompassing 48 criminal justice agencies. Accomplishments included providing technical assessments, purchasing and installing over 200 workstations, 40 servers, 40 switches, 38 wireless data systems, and complete network cabling for the three tribes. NCRLE also educated 90 tribal law enforcement personnel on the fundamentals of Microsoft Windows 2000, Word, Excel, Outlook, Access, and Internet research, and provided advanced technical and network administration courses to 20 tribal computer personnel.



- TJISS was published online in January 2004. Since its introduction in January 2004, TJISS has had over 1,464 unique visitors from over 46 states.
- Agencies nationwide can use our toll-free help desk (877-47-TJISS) or our online technical support knowledgebase to ask computer, network, or software questions. This resource has been utilized by tribes in Alaska, Arizona, California, New Mexico, and North Dakota. NCRLE will continue assisting these tribes by providing custom technical assistance to tribal law enforcement agencies.

BJS Tribal Criminal History Record Improvement Program (T-CHRIP)

In October 2004, the Bureau of Justice Statistics (BJS) awarded NCRLE with a grant to improve public safety in Indian Country by enhancing the quality, completeness, and accessibility of criminal history record information. NCRLE will provide technological interconnectivity between the Hopi and the Pueblo of Zuni tribes and develop the necessary support data sharing mechanisms for integration with federal databases.

NCRLE will work with both tribes to enhance their judicial and law enforcement databases and to implement record automation. NCRLE will develop a shared, uniform, sustainable method for electronic criminal history collection, maintenance, and reporting. The method will utilize standardized software, hardware, and network resources for each tribe to ensure current and future compatibility. These initiatives will also allow BJS to easily extract criminal history data for statistical purposes.

The developed system will have built-in accuracy control checks to verify the data entered into specific fields. Adherence to the highest standards for maintaining privacy and confidentiality will be emphasized. NCRLE will implement network and security measures that will meet or exceed state and federal guidelines, and tribal network personnel will be trained to manage and maintain these measures.

Tribal Technology Information Sharing Outreach Program

NCRLE's Tribal Technology Information Sharing Outreach Program (TTISOP) continues to provide valuable assistance to tribal justice agencies throughout the nation. Using free TTISOP resources, tribal agencies can better assess, plan, and implement their information technology and information sharing systems.

NCRLE developed the Tribal Justice Information Sharing Site (TJISS) at www.tjiss.net to serve as a repository for information technology training materials and assessment tools. All the documentation at TJISS is available for download free of charge, not only to tribal agencies, but to law enforcement in the state of Arkansas and throughout the nation.